

# MONTHLY MEMBERSHIP PROGRESS REPORT

LOCATION NIGERIA

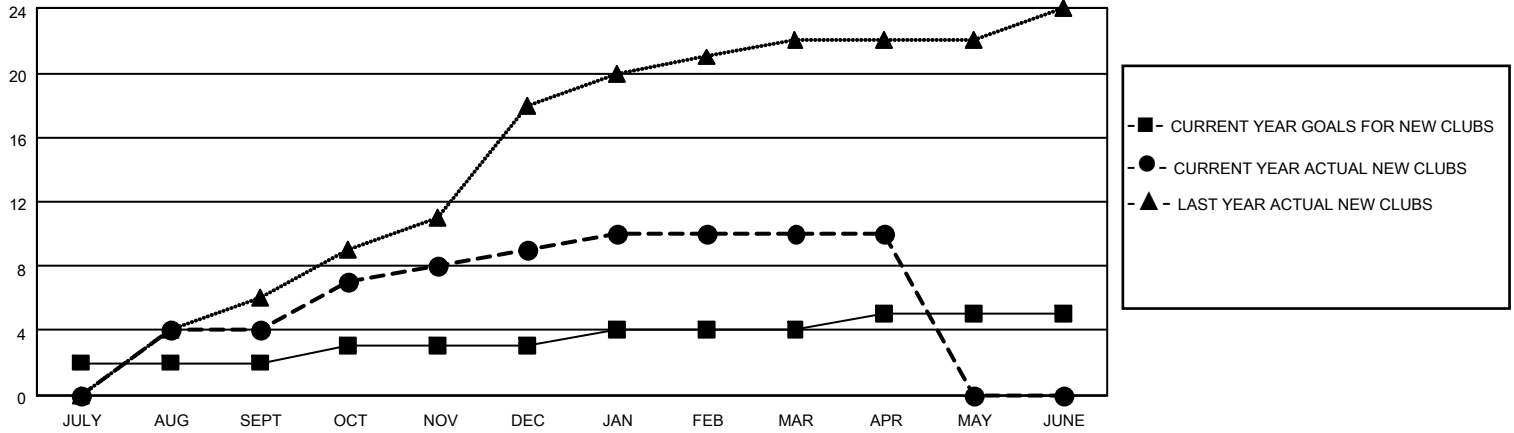
District 404 B1

Results as of: 4/30/2022

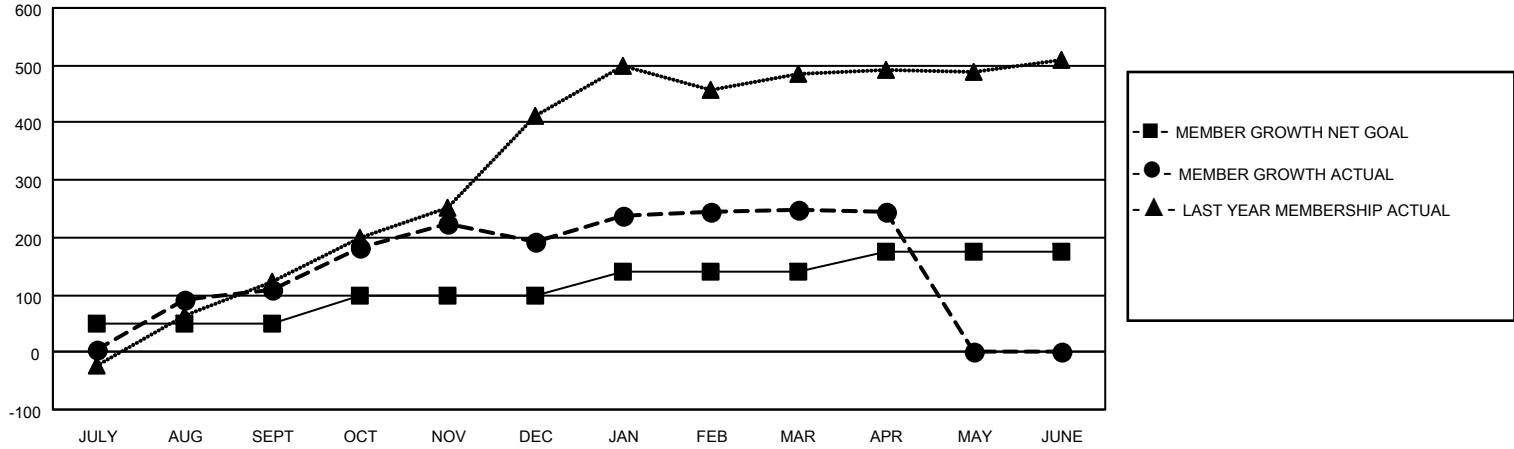
Clubs			
RESULTS FOR 2021-2022			
QUARTER	NEW CLUB GOAL	NEW CLUBS	DROPPED CLUBS
JULY/AUG/SEPT	2	4	0
OCT/NOV/DEC	1	5	0
JAN/FEB/MAR	1	1	0
APR/MAY/JUNE	1	0	0

Members			
RESULTS FOR 2021-2022			
QUARTER	MEMBER GROWTH NET GOAL	MEMBER GROWTH ACTUAL	DROPPED MEMBERS ACTUAL (including transfers)
JULY/AUG/SEPT	50	175	64
OCT/NOV/DEC	50	284	195
JAN/FEB/MAR	40	126	65
APR/MAY/JUNE	35	22	18

**GOALS AND ACTUAL NEW CLUBS CUMULATIVE**



**GOALS AND ACTUAL MEMBERS CUMULATIVE**



<b>DROPPED CLUBS: 0</b>	
<b>DROPPED MEMBERS</b>	
DECEASED	10
CLUB CANCELLED	0
OTHER	332
<b>TOTAL</b>	<b>342</b>

84 CLUBS OF 114 ADDED 1 OR MORE NEW MEMBERS

[CLICK HERE FOR CUMULATIVE MEMBERSHIP DATA](#)

<u>GENDER DISTRIBUTION</u>	
MALE	1,821 (63.54%)
FEMALE	1,044 (36.43%)
NON BINARY	0 (0.00%)
PREFER NOT TO ANSWER	1 (0.03%)
<b>TOTAL FAMILY UNIT MEMBERS</b>	<b>250</b>
<b>FAMILY MEMBERS PAYING HALF DUES</b>	<b>133</b>